



Cary's Water System

Bringing you safe, high-quality water since 1993

Safe Drinking Water Act

- Federal Law that protects public drinking water supplies.
- Passed by Congress in 1974.
- Administered by US EPA.
- Established
 - National Standards for Tap Water
 - Multiple Barrier Treatment Processes
 - Certified Operators
 - Water Quality Reporting

WHO WE SERVE



Morrisville
Live connected. Live well.





FUN FACTS

- How many customers do we serve?
 - Approximately 280,000
- How much water can we treat?
 - 56 million gallons per day
- Who is our largest water customer?
 - Raleigh-Durham International Airport

***Job #1: Provide clean, safe,
high-quality drinking water
that tastes great.***





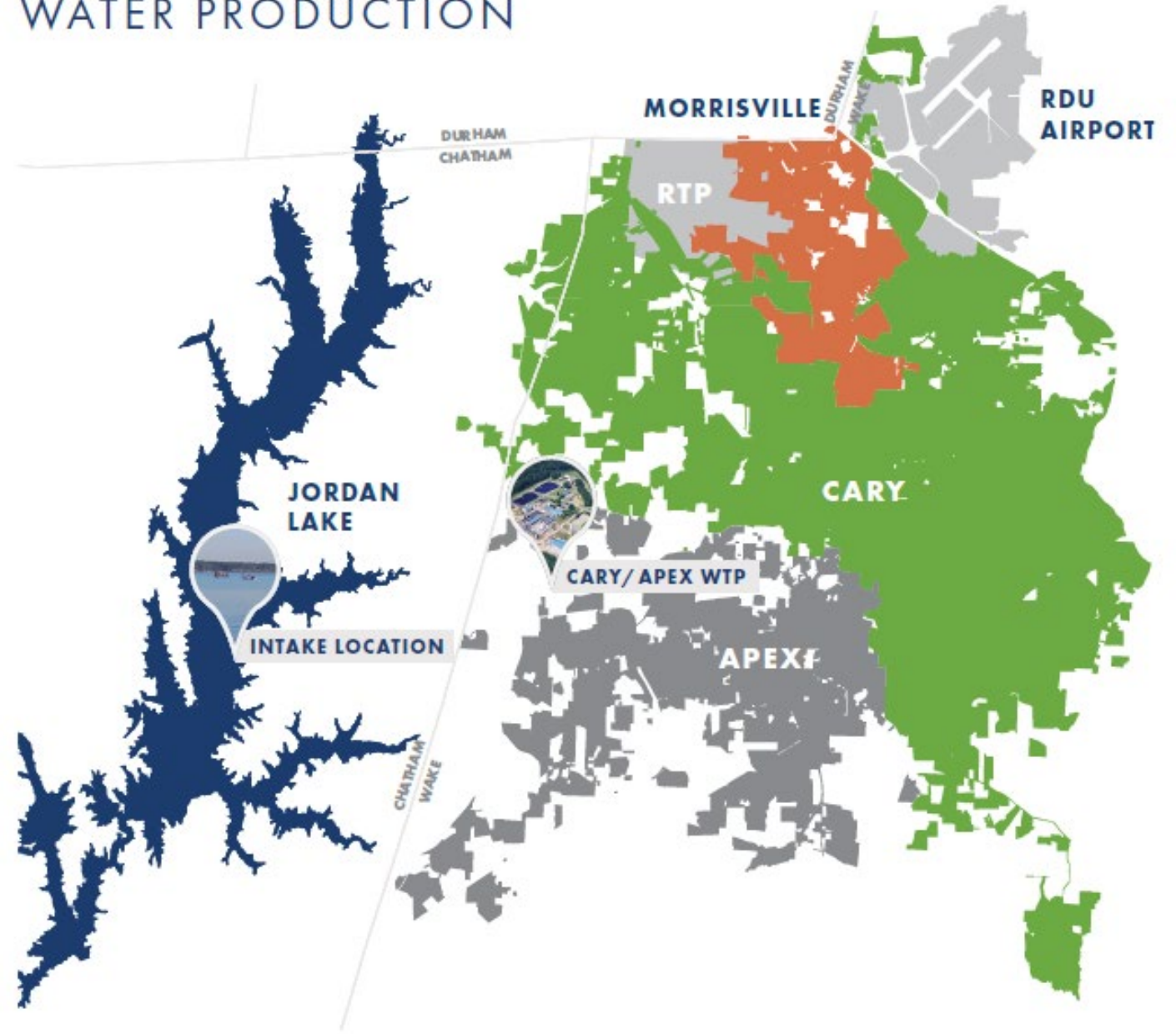
THE SOURCE

Where It All Begins



JORDAN LAKE

WATER PRODUCTION



JORDAN LAKE WATERSHED



PUMP STATION AND INTAKE

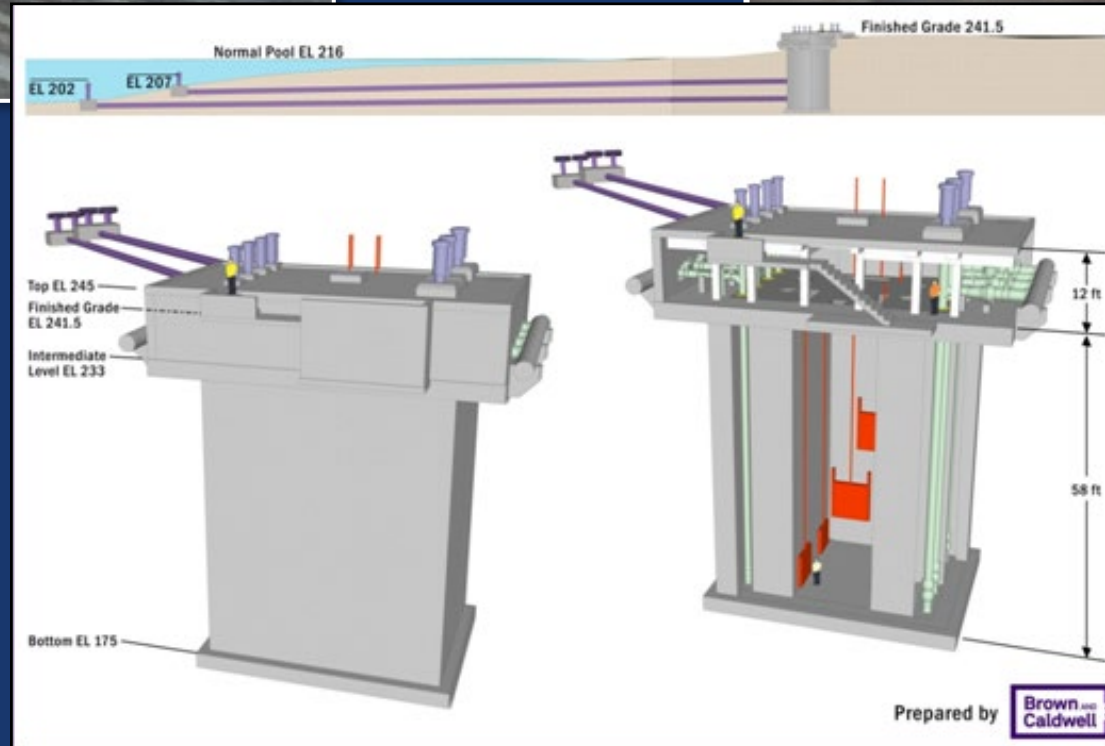
Intake is 510 ft off shore



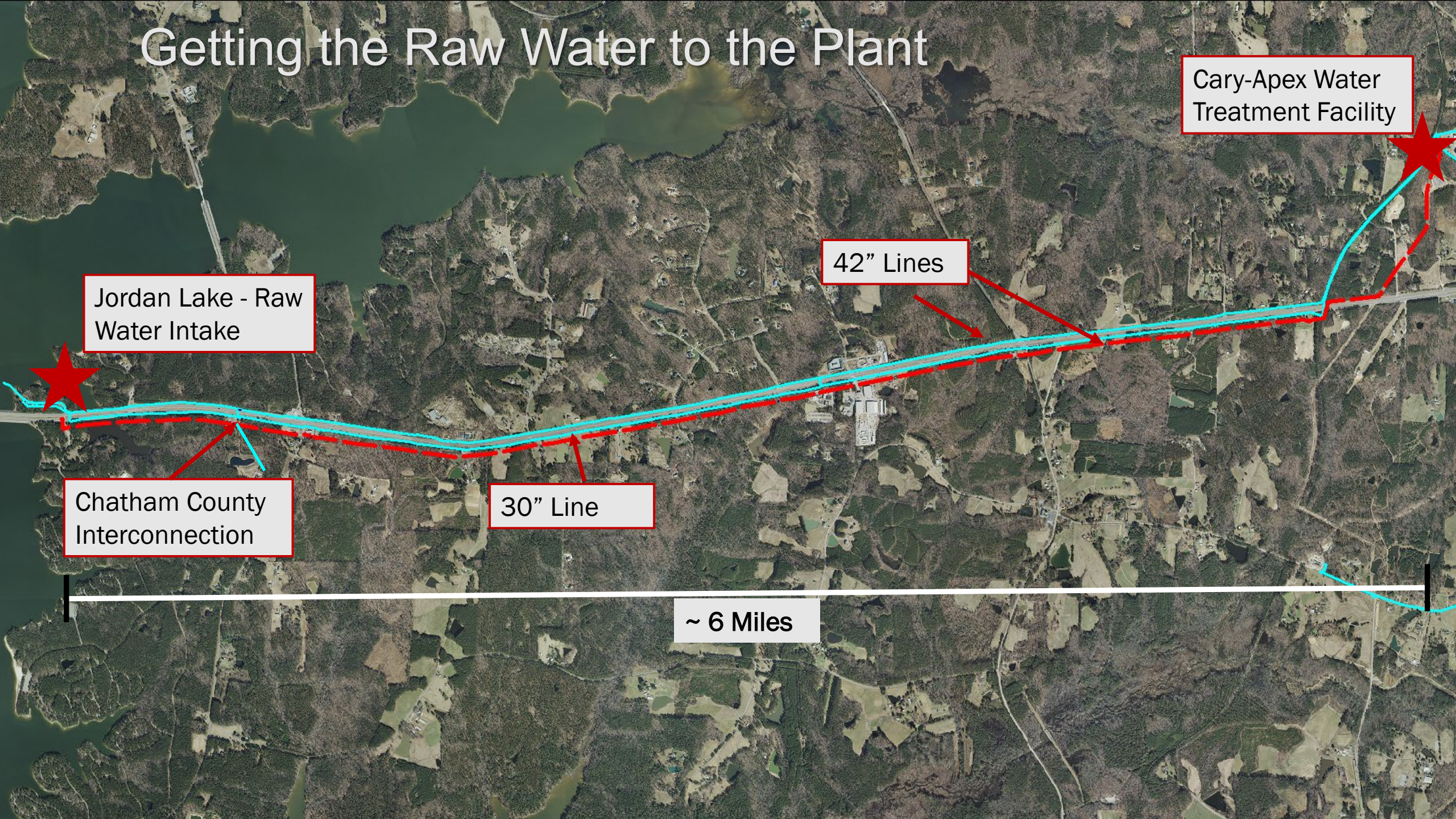
Raw Water Pump Station



- Over 9 billion gallons pumped annually
- Annual Avg pumping rate of 23 million gallons/day
- 7 Pumps - 5,600-HP



Getting the Raw Water to the Plant



Cary-Apex Water Treatment Facility

42" Lines

Jordan Lake - Raw Water Intake

Chatham County Interconnection

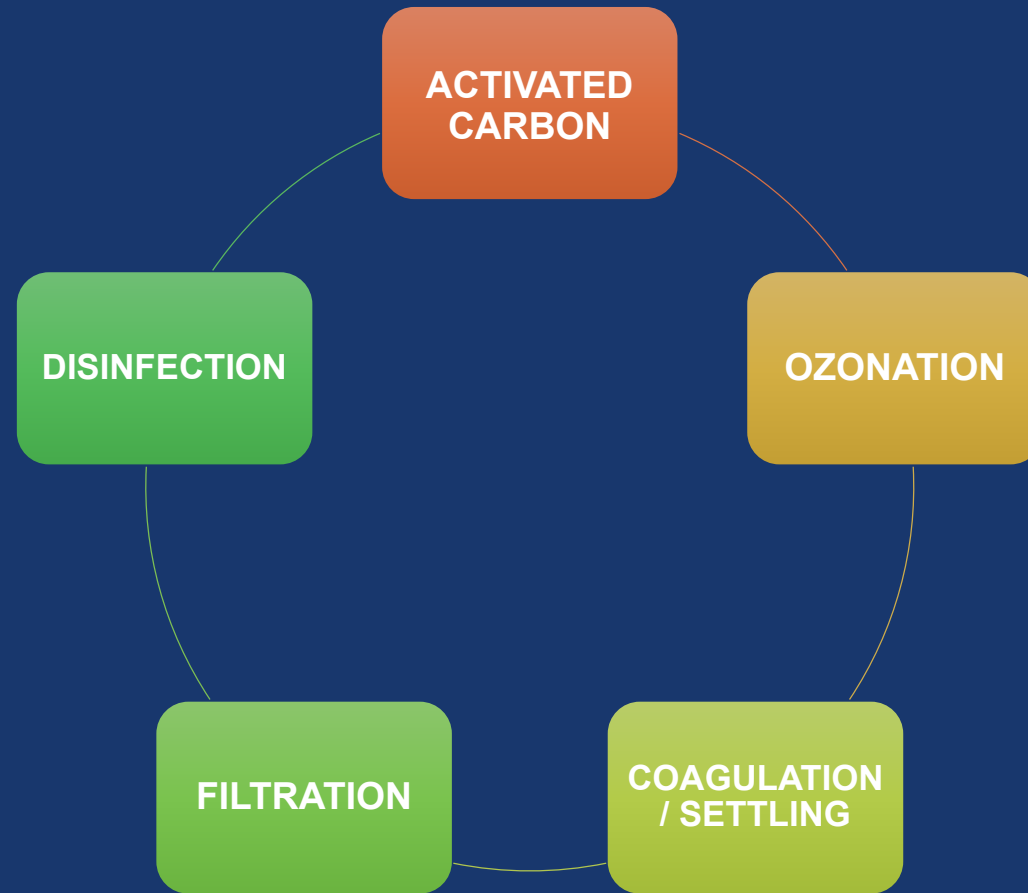
30" Line

~ 6 Miles



Water Treatment

MULTI-BARRIER TREATMENT

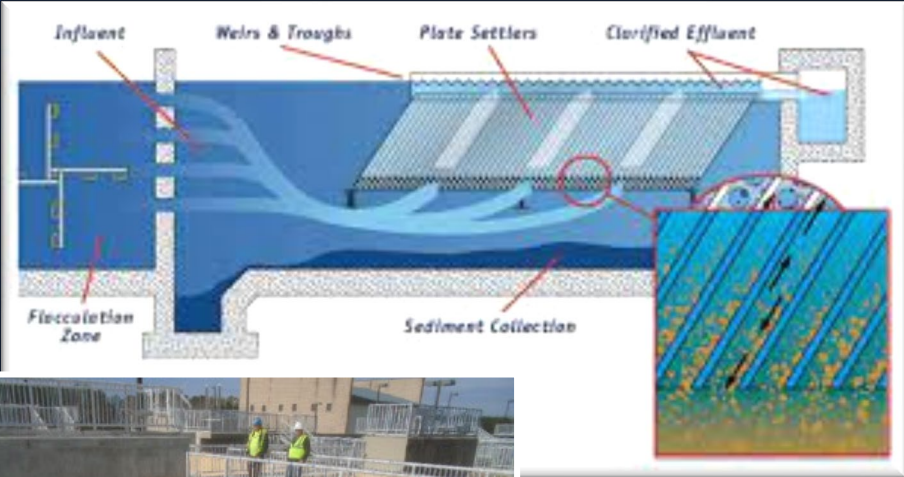




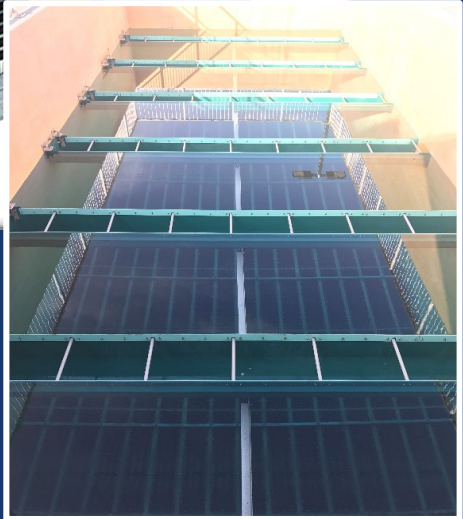
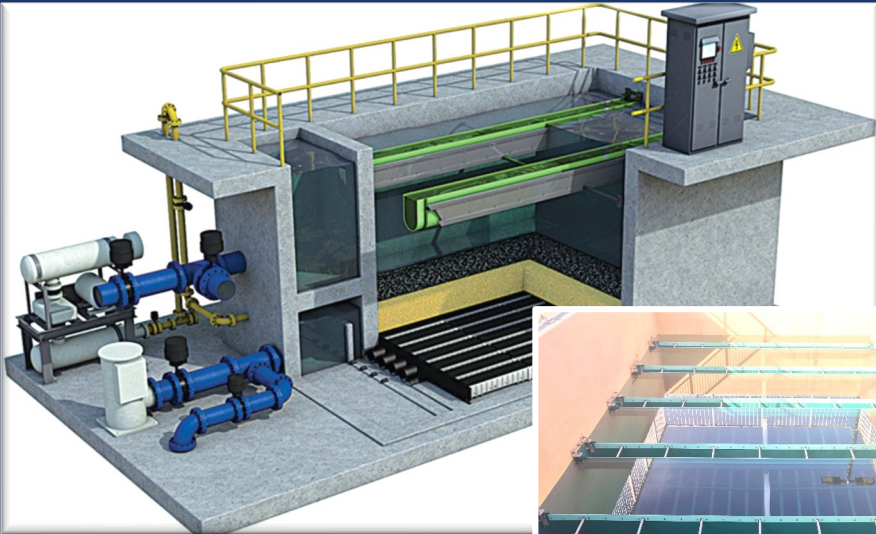
Ozone System

⚡ lightning in a bottle ⚡

COAGULATION AND SEDIMENTATION



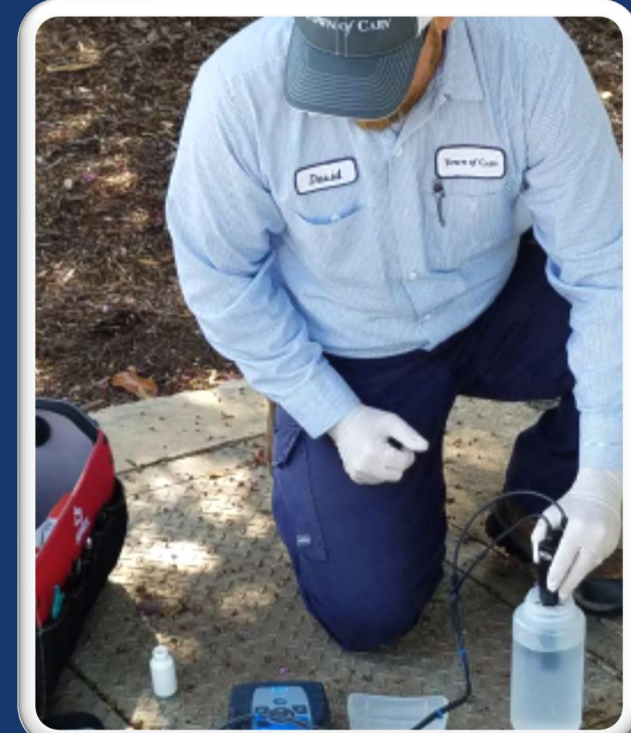
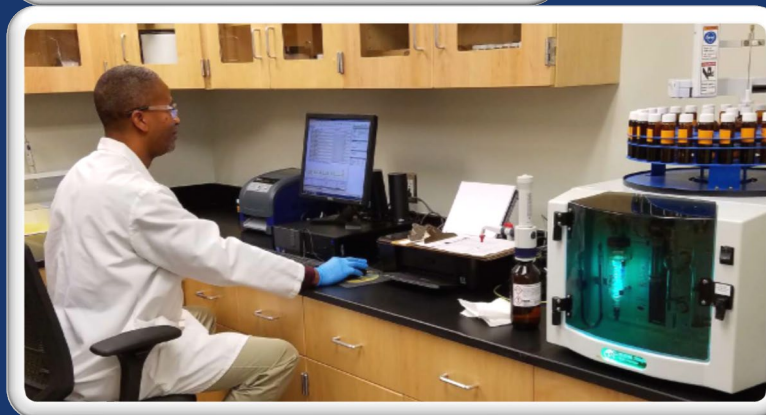
FILTRATION



Operations

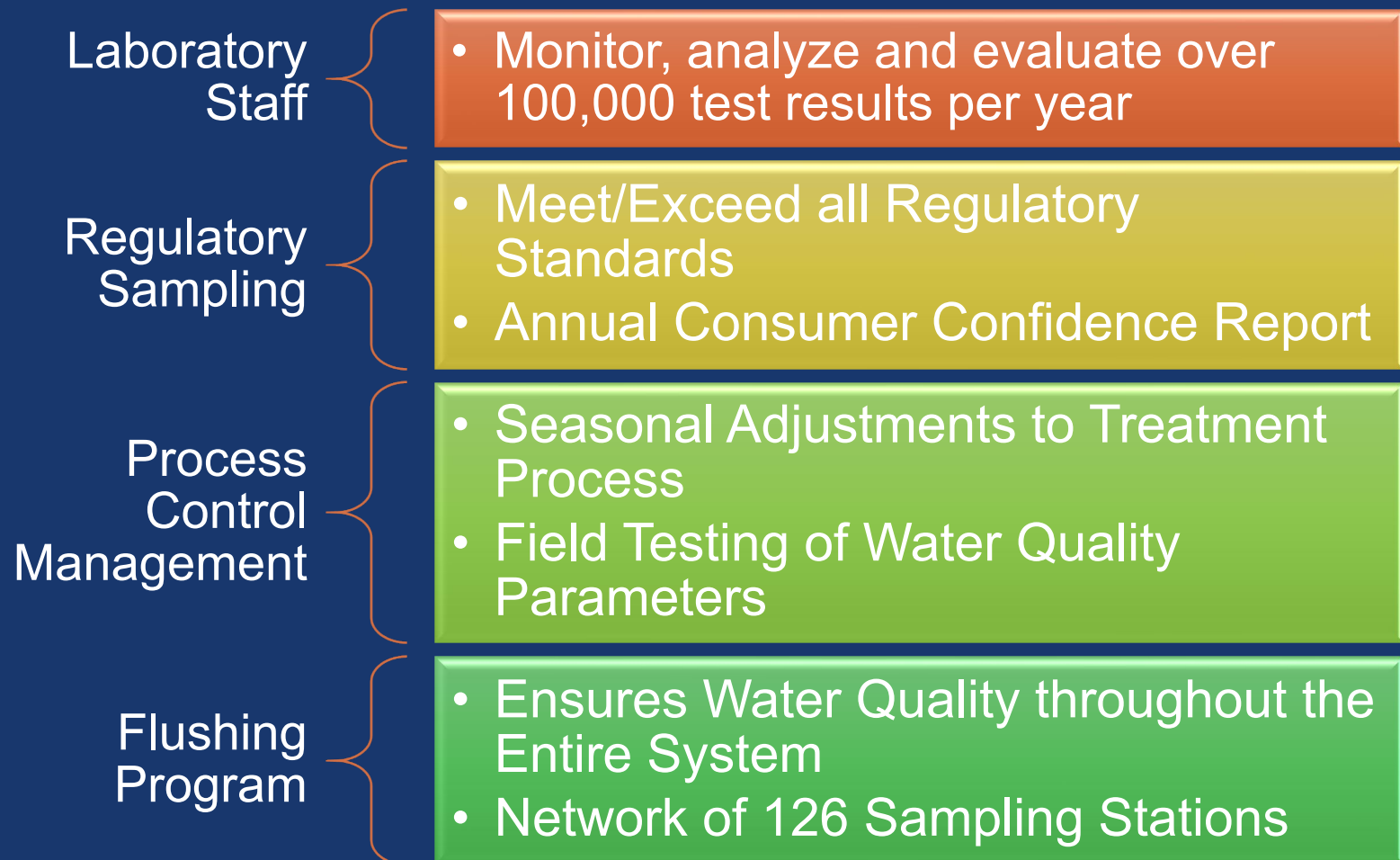


Laboratory



Water Quality Management

■ Multiple QC Processes



Resilient Operations



MULTIPLE INTERCONNECTS

PARTNERSHIPS WITH OUR
NEIGHBORS

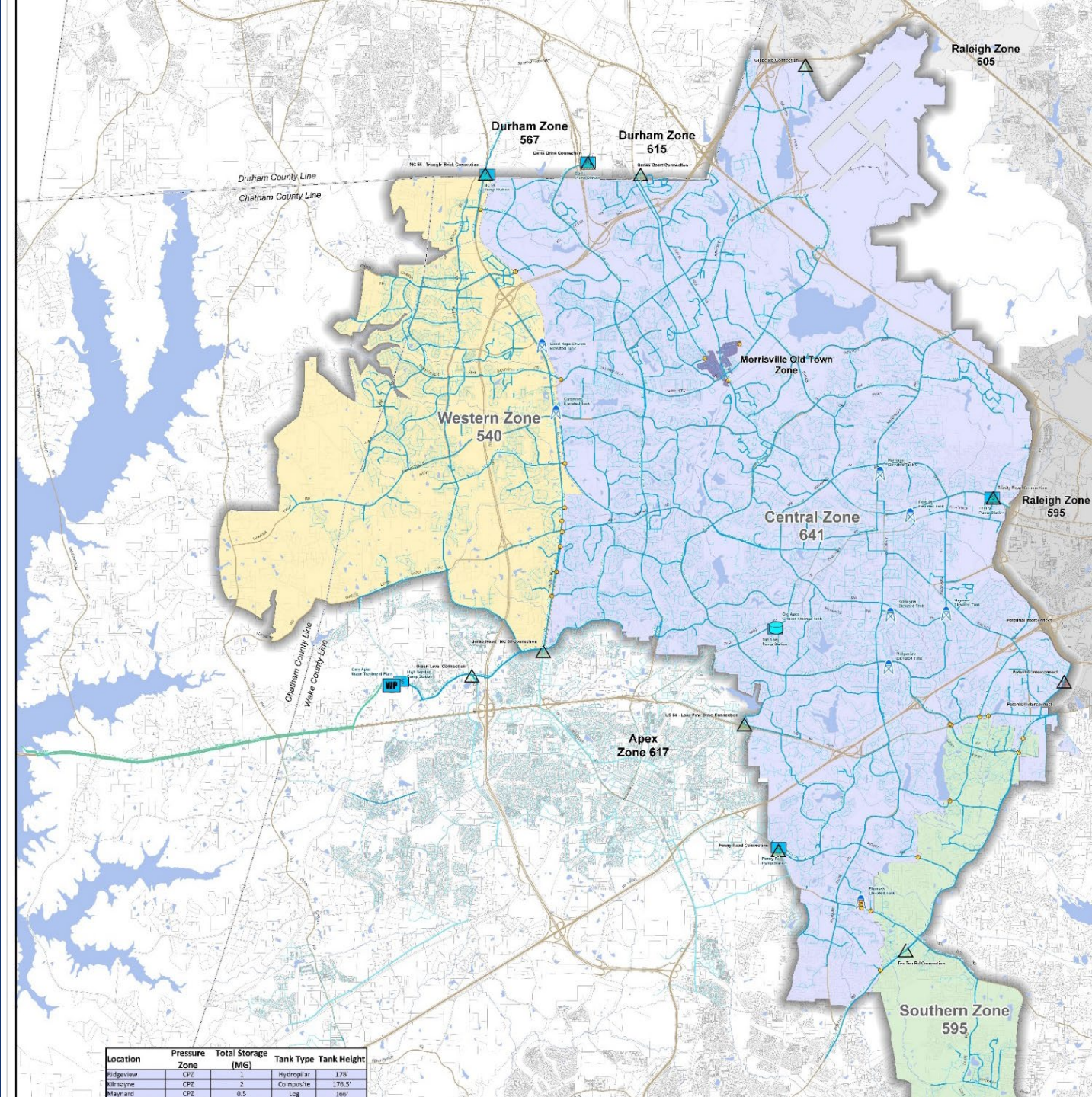
EMERGENCY GENERATORS
• AT THE LAKE AND AT THE PLANT

EMERGENCY
PREPAREDNESS PLANNING

KEEPING THINGS SECURE



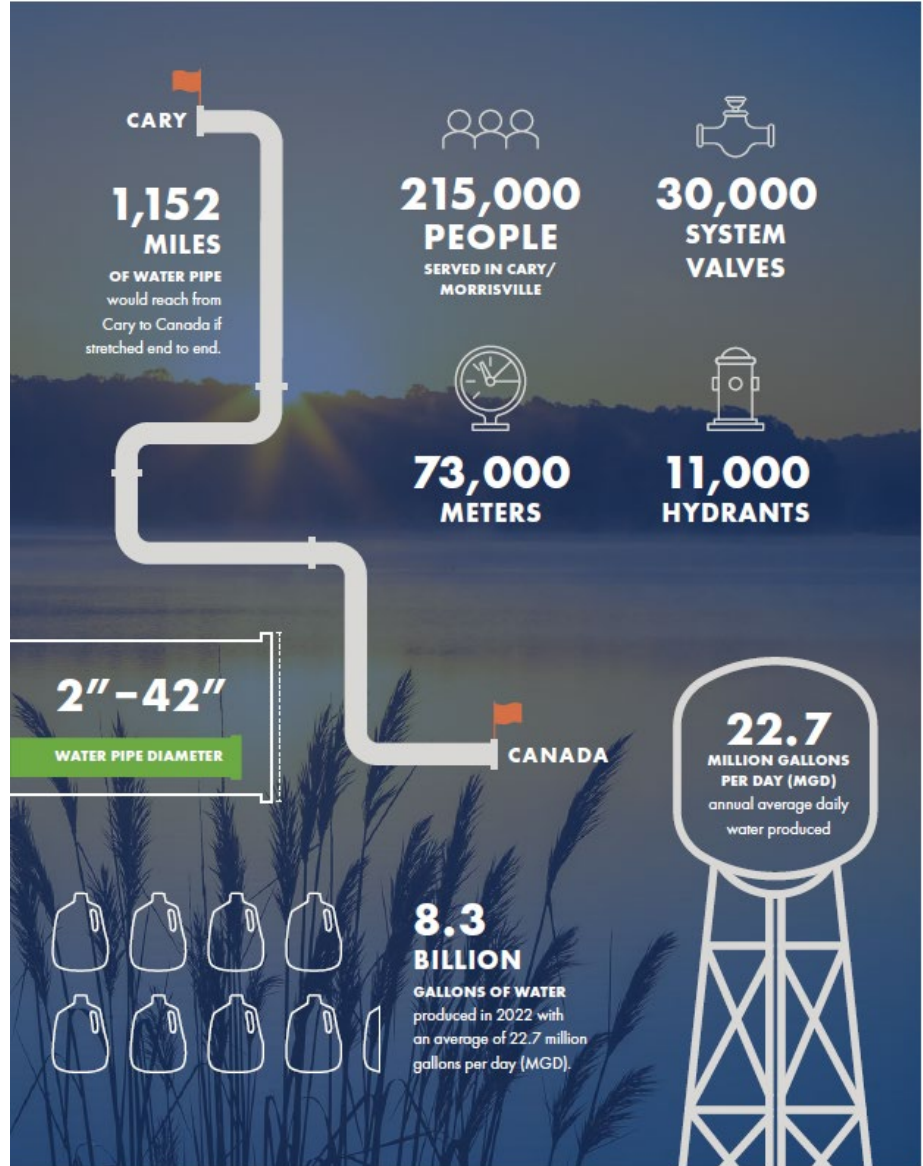
- Secured, monitored facilities
- Staffed 24/7/365
- Regular rounds
- Samples taken throughout each shift
- Access-limited SCADA system

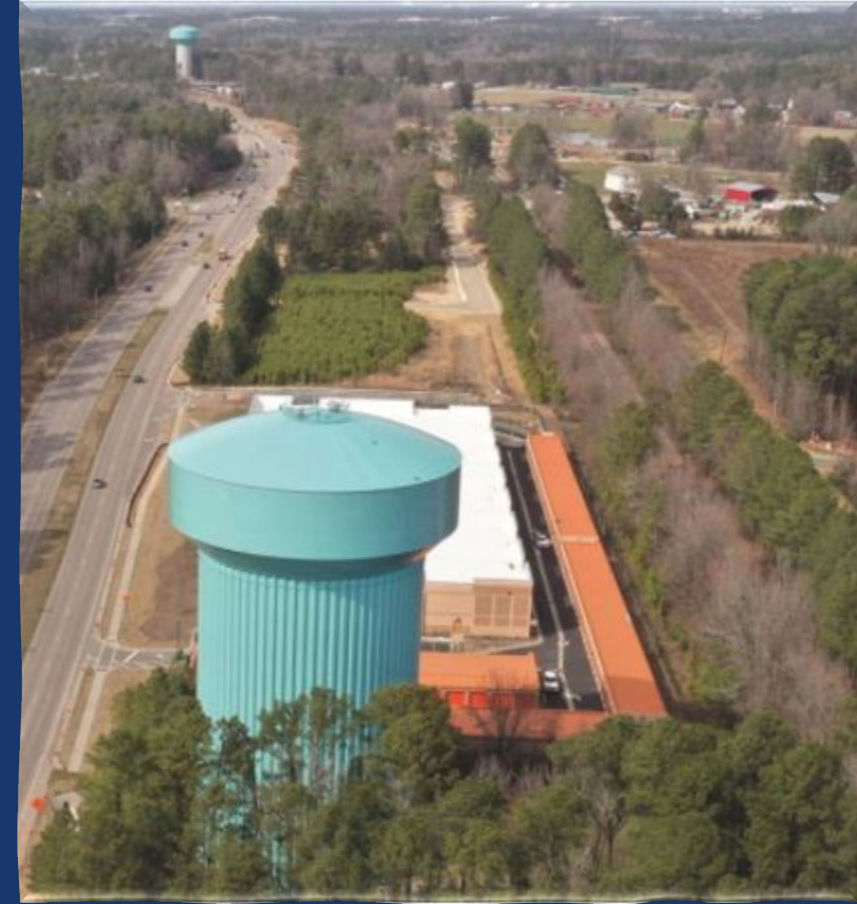


Water distribution

Location	Pressure Zone	Total Storage (MG)	Tank Type	Tank Height
Ridgeway	CPZ 1	1	Hydroplan	138'
Edinboro	CPZ 2	2	Composite	176.5'
Maynard	CPZ 0.5	0.5	Log	166'







WATER STORAGE TANKS

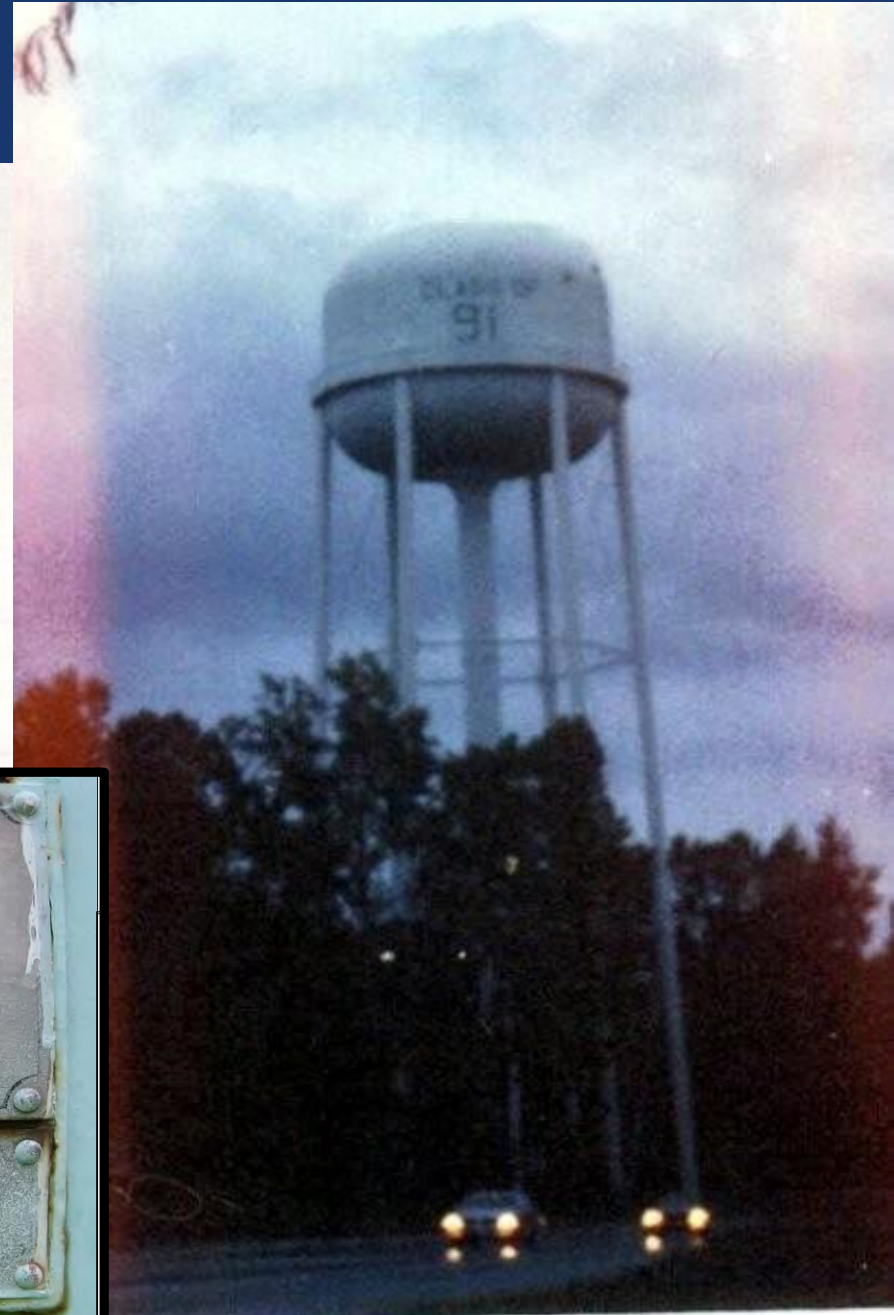
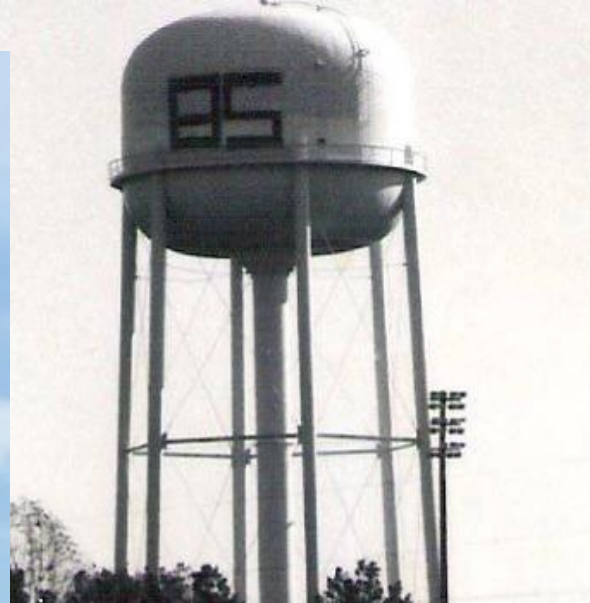
- 8 ELEVATED TANKS
- 4 GROUND-LEVEL TANKS
 - 3 AT CAWTF
 - 1 IN SYSTEM
- ATTENUATE PEAKS
- CONTROL PRESSURE
- INSTANT DEMAND
- FIRE PROTECTION

THE ORIGINAL

Constructed in 1966,
0.5 million gallons of storage



MAYNARD TANK



AWARD WINNING WATER



Partnership for Safe Water
President's Award



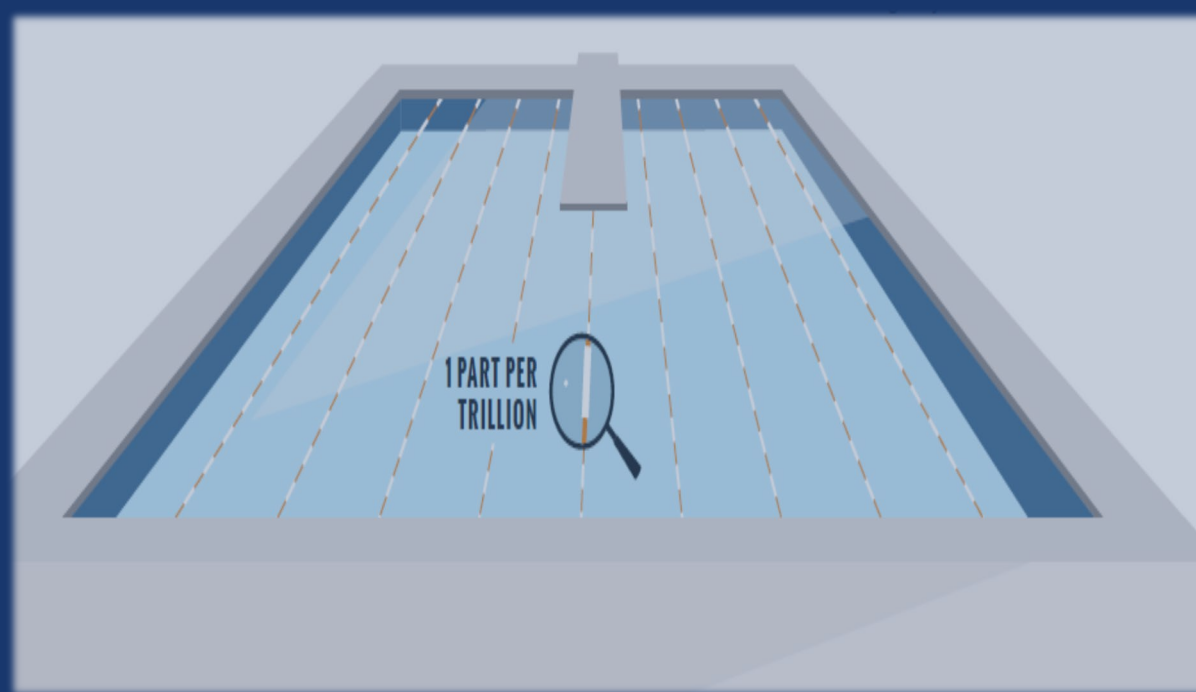
Eleven-time winner of the NC
Area-Wide Optimization Award



2018 - 2022 Winner NC Water
Distribution System of the Year

What's on tap?

- Lead
 - Preparing for new EPA lead and copper rule
 - Cary does not use lead distribution pipes
 - Town-side service lines copper since 1980
 - Treatment includes addition of corrosion inhibitor
- Emerging contaminants
 - Proactive emerging contaminant monitoring
 - Perfluorinated compounds
 - 1,4 dioxane
 - UCMR 4
 - Upgrading to biofiltration
 - Preparing for the future



**GET THE
LEAD OUT!**

Important information about
drinking water and lead





QUESTIONS?