



Chapel Hill



Public Works



Our Divisions:



ADMINISTRATION



**FACILITIES
MANAGEMENT**



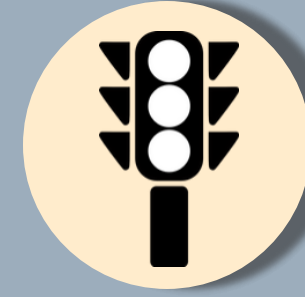
SOLID WASTE



**ENGINEERING
& DESIGN**



FLEET



**TRANSPORTATION
ENGINEERING**



**STORMWATER
MANAGEMENT**

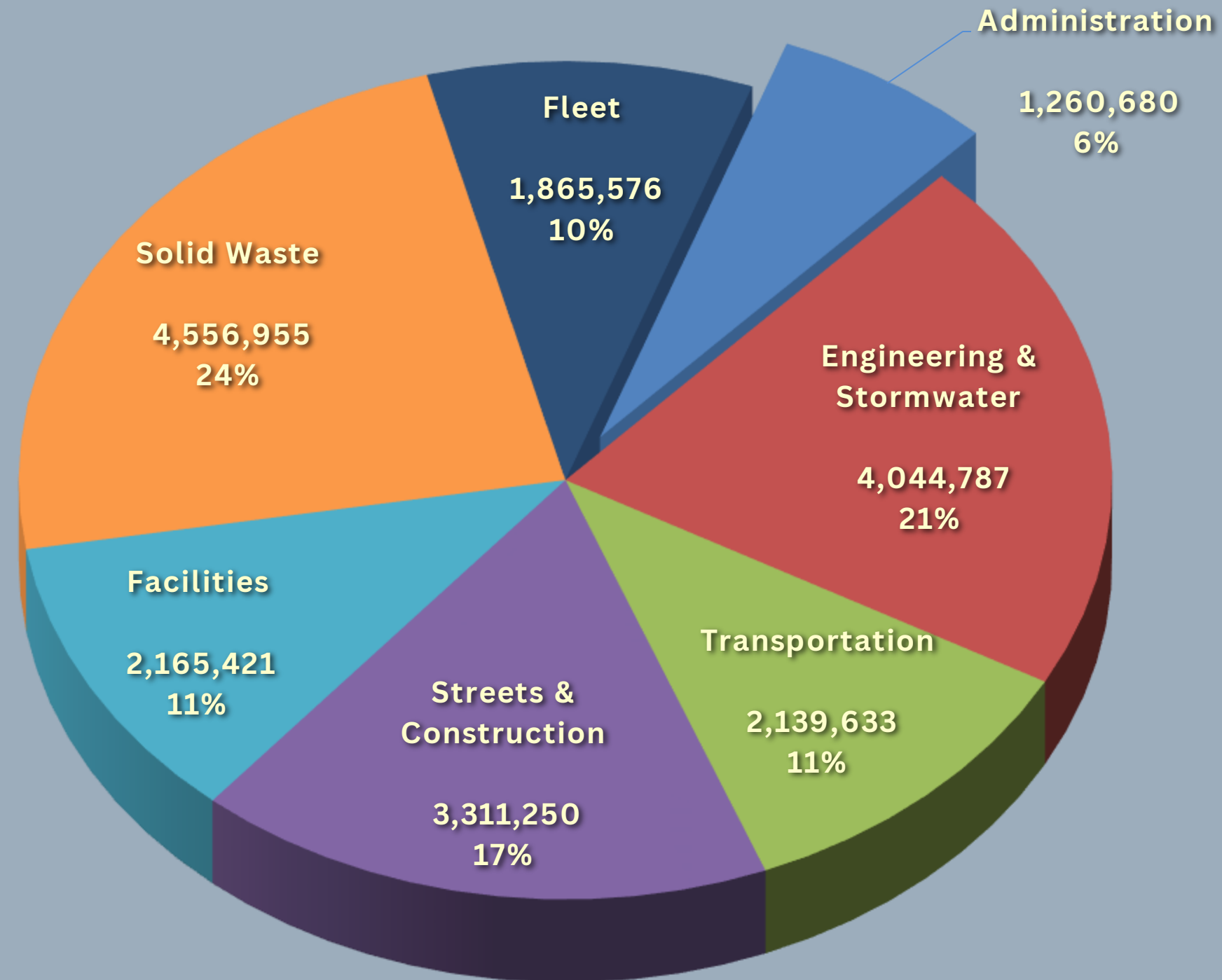


**STREET &
CONSTRUCTION**



Annual Budget

\$19,344,302

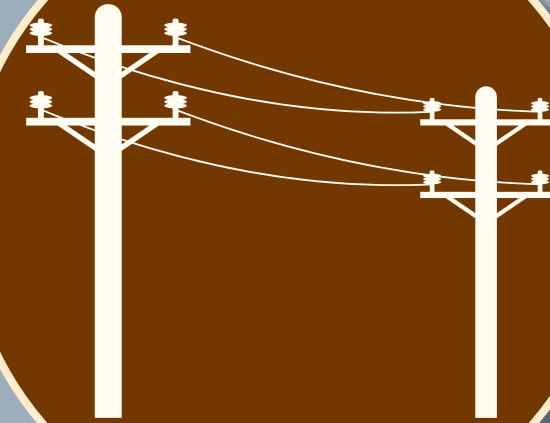




Administration



Engineering & Design





Stormwater Management



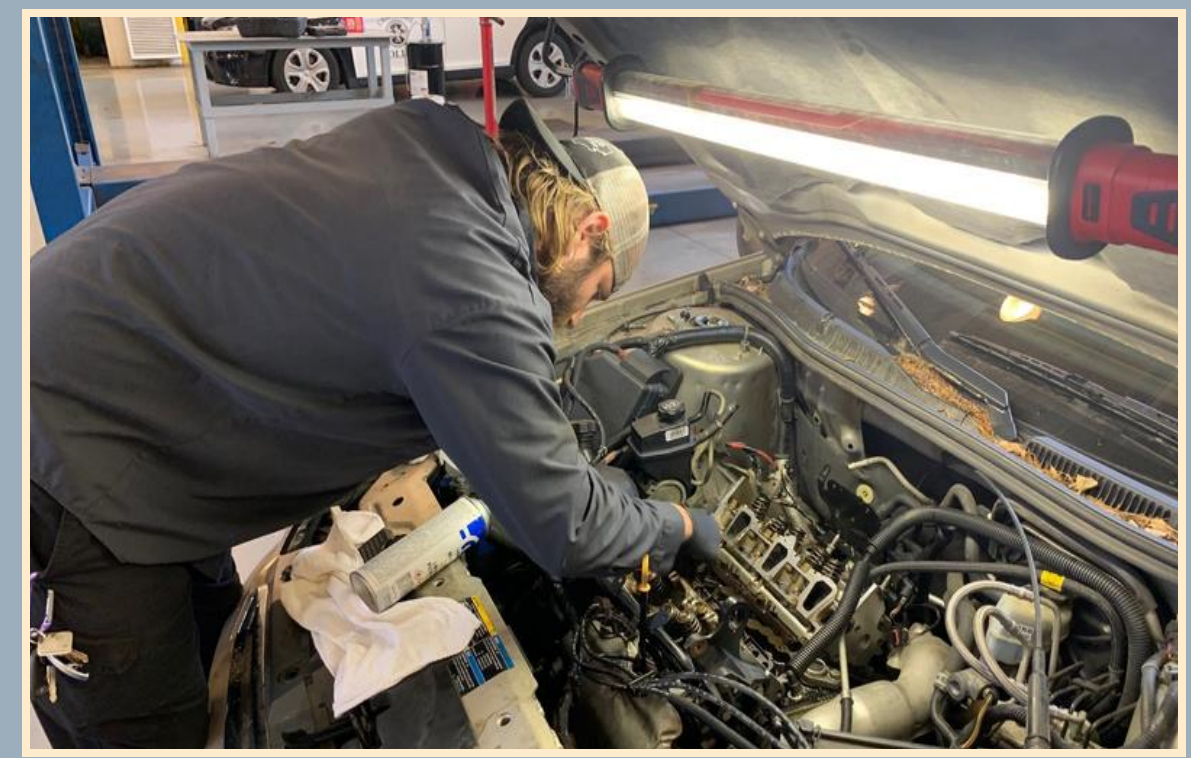


Facilities Management





Fleet





Streets & Construction



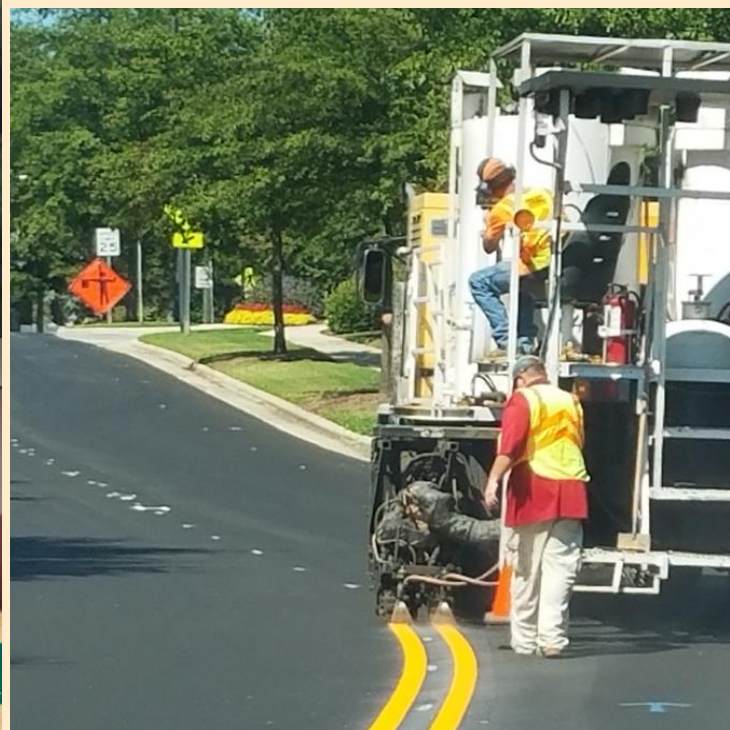


Solid Waste





Transportation Engineering

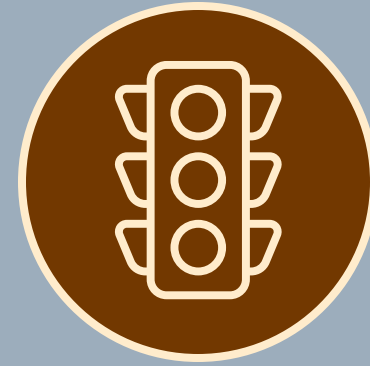




Special Events

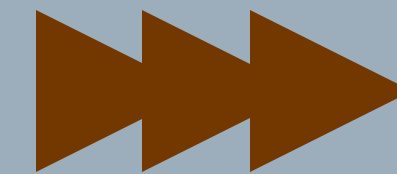


Join the Team



CONTACT US

APPLY NOW



(919) 969-5100
publicworks@townofchapelhill.org